

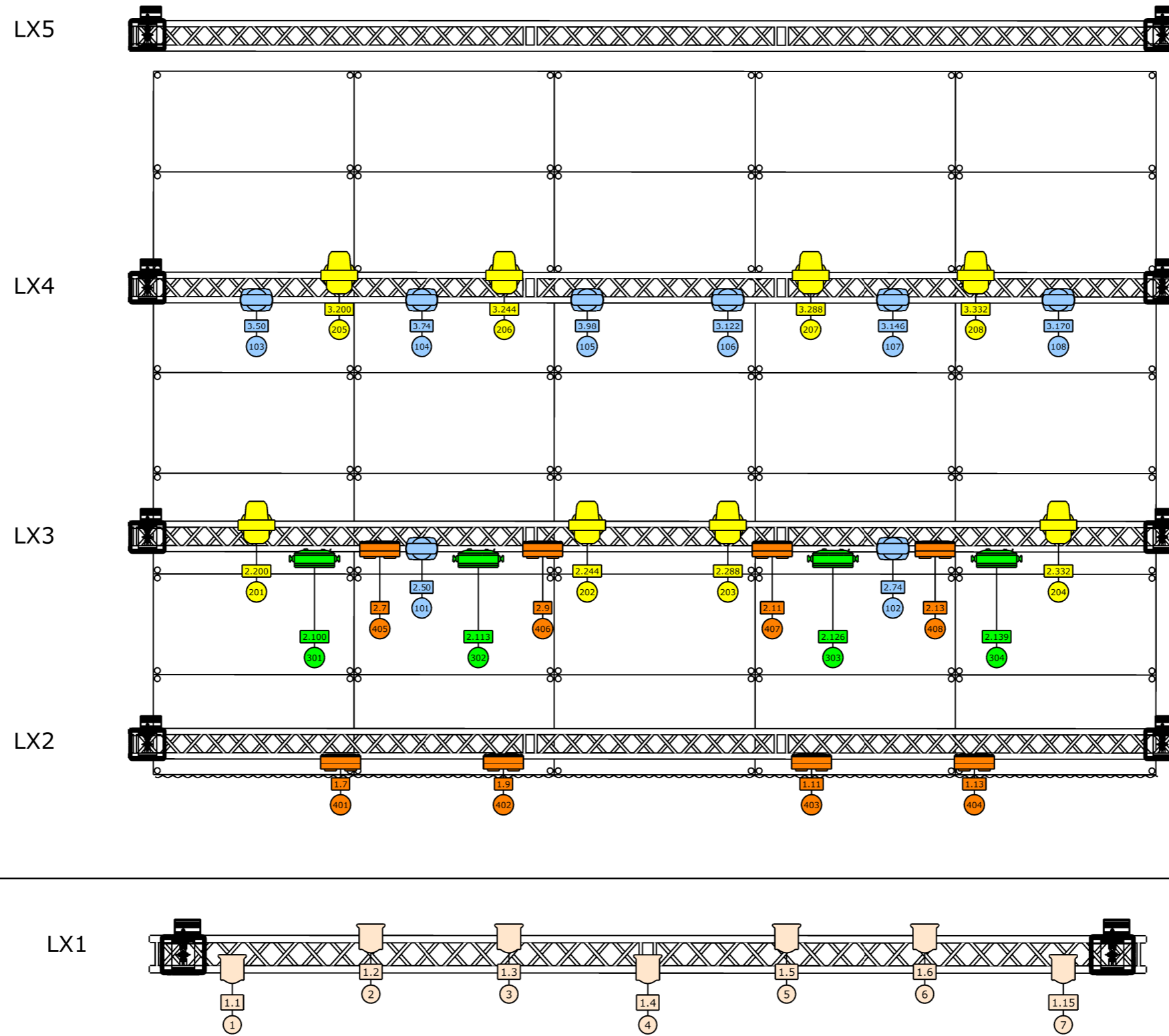


Fiskepiren





Temporary Standard Light Plot

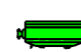



1 - Patch



Symbol key

-  Acme Stage Blinder IP
Mode: 2ch, Count: (8)
-  Robe LED Beam 350
Mode: 3 Count: (8)
-  Robe Painte
Mode: 1, Count: (8)
-  Showtec ACT 150w
Mode 1ch, Count (7)

-  Acme Thunder Breaker
Mode: 13A Count: (4)

Project Temporary Standard Light		
Project location Fiskepiren		
Lighting Designer Daniel Underhaug		
Drawing author Daniel Underhaug		
Drawing Version v02	Drawing Date 11.09.2023	

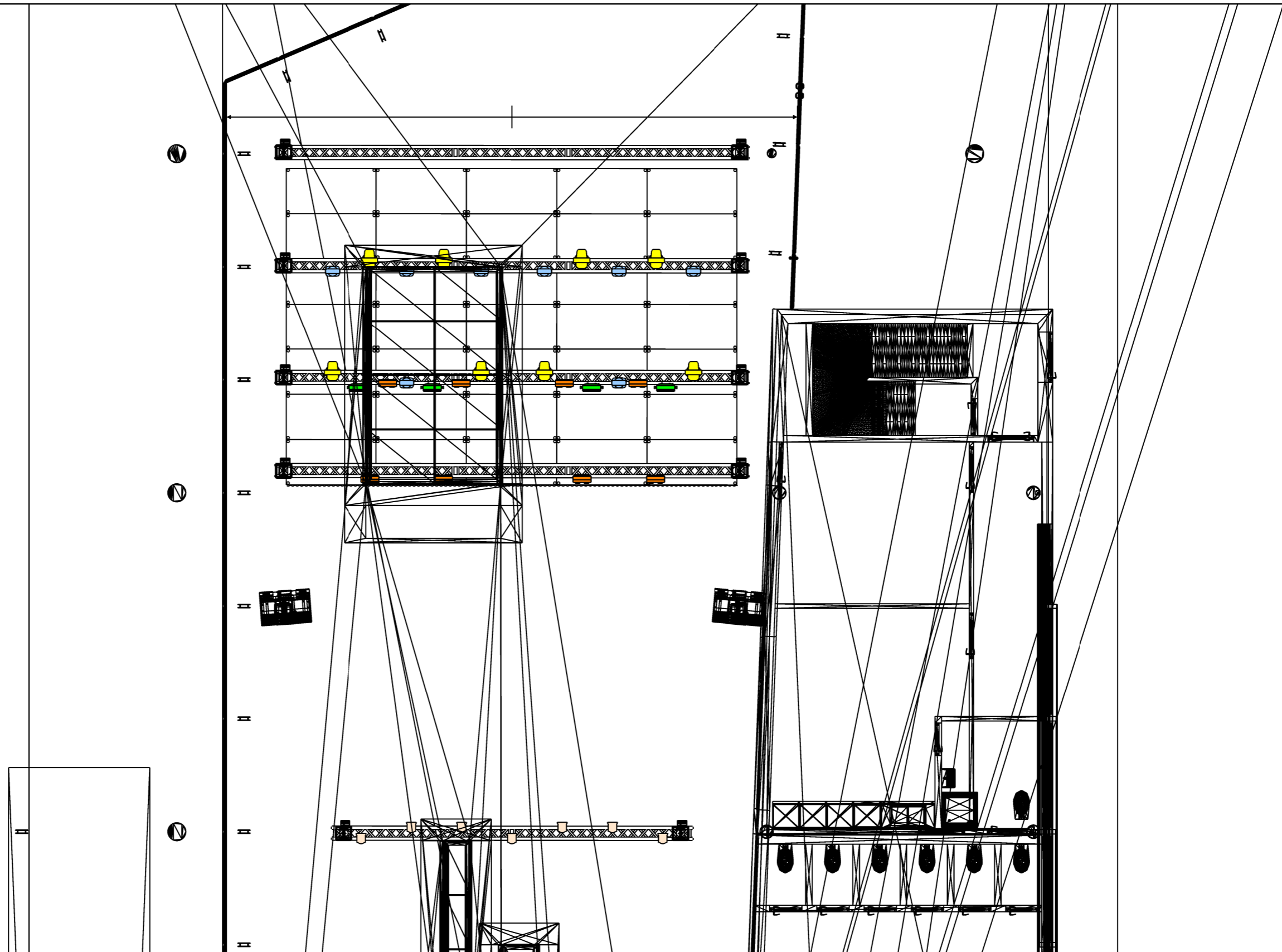
Temporary Standard Light Plot PATCH


Fiskepiren

Fixtures

ID:	Name	Patch	Mode	Note
1	Film Gear LED Fresnel 150W	1.1	Control	(Showtec ACT 150)
2	Film Gear LED Fresnel 150W	1.2	Control	(Showtec ACT 150)
3	Film Gear LED Fresnel 150W	1.3	Control	(Showtec ACT 150)
4	Film Gear LED Fresnel 150W	1.4	Control	(Showtec ACT 150)
5	Film Gear LED Fresnel 150W	1.5	Control	(Showtec ACT 150)
6	Film Gear LED Fresnel 150W	1.6	Control	(Showtec ACT 150)
7	Film Gear LED Fresnel 150W	1.15	Control	(Showtec ACT 150)
101	Robe Robin LEDBeam 350	2.50	3 - Cpulse [Col Mix=RGBW]	1.3
102	Robe Robin LEDBeam 350	2.74	3 - Cpulse [Col Mix=RGBW]	1.3
103	Robe Robin LEDBeam 350	3.50	3 - Cpulse [Col Mix=RGBW]	1.3
104	Robe Robin LEDBeam 350	3.74	3 - Cpulse [Col Mix=RGBW]	1.3
105	Robe Robin LEDBeam 350	3.98	3 - Cpulse [Col Mix=RGBW]	1.3
106	Robe Robin LEDBeam 350	3.122	3 - Cpulse [Col Mix=RGBW]	1.3
107	Robe Robin LEDBeam 350	3.146	3 - Cpulse [Col Mix=RGBW]	1.3
108	Robe Robin LEDBeam 350	3.170	3 - Cpulse [Col Mix=RGBW]	1.3
201	Robe Robin Painte	2.200	1	
202	Robe Robin Painte	2.244	1	
203	Robe Robin Painte	2.288	1	
204	Robe Robin Painte	2.332	1	
205	Robe Robin Painte	3.200	1	
206	Robe Robin Painte	3.244	1	
207	Robe Robin Painte	3.288	1	
208	Robe Robin Painte	3.332	1	
301	Acme Thunder Breaker	2.100	13A Channel	
302	Acme Thunder Breaker	2.113	13A Channel	
303	Acme Thunder Breaker	2.126	13A Channel	
304	Acme Thunder Breaker	2.139	13A Channel	
401	Acme Stage Blinder IP	1.7	2 Channel Mode	
402	Acme Stage Blinder IP	1.9	2 Channel Mode	
403	Acme Stage Blinder IP	1.11	2 Channel Mode	
404	Acme Stage Blinder IP	1.13	2 Channel Mode	
405	Acme Stage Blinder IP	2.7	2 Channel Mode	
406	Acme Stage Blinder IP	2.9	2 Channel Mode	
407	Acme Stage Blinder IP	2.11	2 Channel Mode	
408	Acme Stage Blinder IP	2.13	2 Channel Mode	

2 - Overview



Project	Temporary Standard Light	
Project location	Fiskepiren	
Lighting Designer	Daniel Underhaug	
Drawing author	Daniel Underhaug	
Drawing Version	v02	Drawing Date 11.09.2023